

EVIO Labs Eugene
 1686 Pearl Street, Eugene, OR 97401
 541-505-9193 / OLCC 010-10035420314 / www.EVIOLabs.com

Field 1

Flyboy Naturals

INFO ONLY

Confident Cannabis ID: 1810OAS0099.3718

Sample ID: E180849-04

Matrix: Hemp

METRC Batch #: n/a

Sampling Method/SOP: SOP.T.20.010

Date Sampled: 10/30/18 11:00

Date Accepted: 10/31/18

Results Valid Until: 10/30/19

Harvest/Process Lot ID: n/a

Batch ID: n/a

Batch Size: n/a

Unit for Sale: n/a

Harvest/Production Date: n/a

Cannabinoid Analysis

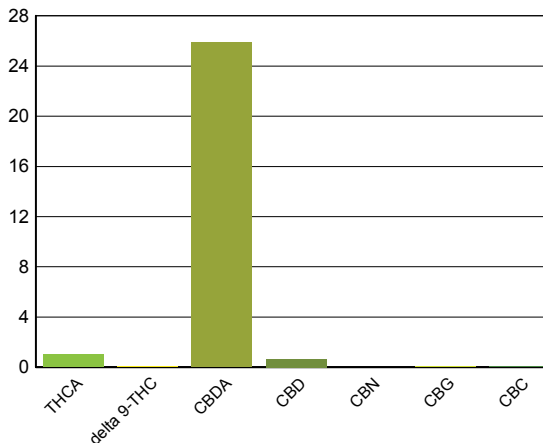
FOR INFORMATIONAL USE ONLY - NOT FOR REGULATORY PURPOSES

Date/Time Extracted: 11/02/18 12:32

Analysis Method/SOP: SOP.T.40.020

Date/Time Analyzed: 11/06/18 10:56

Cannabinoids	LOQ(%)	mg/g	% weight	Cannabinoids Profile
Total THC ((THCA*0.877)+Δ9THC)		9.49	0.949	
Total CBD ((CBDA*0.877)+CBD)		234	23.4	
THCA	0.0500	10.2	1.02	
delta 9-THC	0.0500	0.556	0.0556	
delta 8-THC	0.0500	< LOQ	< LOQ	
CBDA	0.0500	259	25.9	
CBD	0.0500	6.79	0.679	
CBN	0.0500	< LOQ	< LOQ	
CBG	0.0500	0.783	0.0783	
CBC	0.0500	0.543	0.0543	
Sum of tested Cannabinoids	0.0500	287	28.7	

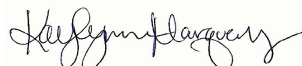


Moisture Content

Date/Time Analyzed: 11/02/18 19:00
 Analysis Method/SOP: SOP.T.40.010

Moisture: 14.5 %

"Total THC" and "Total CBD" are calculated values and are an Oregon reporting requirement (OAR 333-064-0100). For Cannabinoid analysis, only delta 9-THC, THCA, CBD, CBDA are ORELAP accredited analytes. Cannabinoid values reported for plant matter are dry weight corrected; Oregon Water Activity action level is 0.65Aw; Samples above limit will be highlighted **RED**; FD = Field Duplicate; LOQ = Limit of Quantitation. Cannabinoid analysis performed in conjunction with EVIO Labs Portland.


 Kaylynne Marquez
 Interim Lab Director - 11/6/2018

EVIO Labs Eugene
1686 Pearl Street, Eugene, OR 97401
541-505-9193 / OLCC 010-10035420314 / www.EVIOLabs.com

Quality Control

Batch: P18K009 - SOP.T.30.050 Prep for Cannabinoids

Blank(P18K009-BLK1)			Extracted: 11/02/18 13:19		Analyzed: 11/06/18 10:56		
Analyte	Result	LOQ	Recovery Limits	Analyte	Result	LOQ	Recovery Limits
THCA	< LOQ	0.0500 (%)	< LOQ	delta 9-THC	< LOQ	0.0500 (%)	< LOQ
delta 8-THC	< LOQ	0.0500 (%)	< LOQ	CBDA	< LOQ	0.0500 (%)	< LOQ
CBD	< LOQ	0.0500 (%)	< LOQ	CBG	< LOQ	0.0500 (%)	< LOQ
CBN	< LOQ	0.0500 (%)	< LOQ	CBC	< LOQ	0.0500 (%)	< LOQ
Sum of tested Cannabinoid:	< LOQ	0.0500 (%)	< LOQ				



Kaylynne Marquez
 Interim Lab Director - 11/6/2018