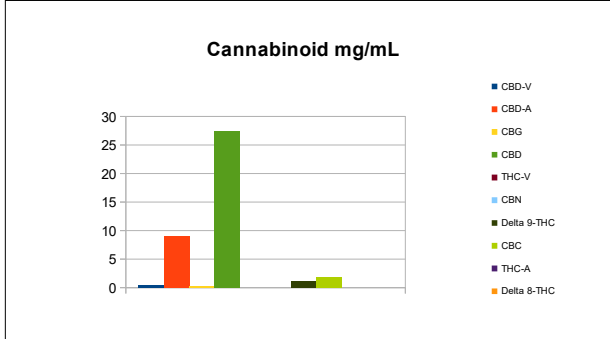



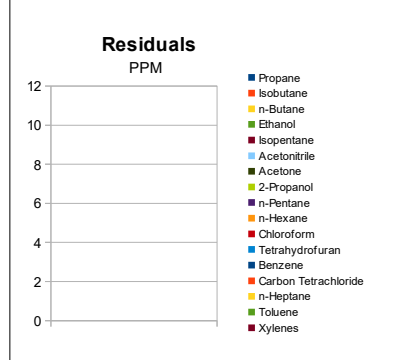
Sample Information			
Sample Identification	1,200 full spectrum		
Laboratory Number	2019013552		
Batch Number	NA		
Matrix	Tincture		
Analyzed Date	06/21/19		
Extraction Date	06/21/19		
Cannabinoid (HPLC)	mg/mL	mg/Bottle	%
Compound			
CBD-V	0.52	15.54	0.05%
CBD-A	8.98	269.34	0.94%
CBG	0.36	10.67	0.04%
CBD	27.42	822.56	2.87%
THC-V	ND	ND	ND
CBN	ND	ND	ND
Delta 9-THC	1.23	36.91	0.13%
CBC	1.87	56.04	0.20%
THC-A	ND	ND	ND
Delta 8-THC	ND	ND	ND
Cannabinoids Total			
Max Active THC	1.23	36.91	0.13%
Max Active CBD	35.32	1059.58	3.70%
T. Active Cannabinoids	31.39	941.72	3.29%
Total Cannabinoids	40.37	1211.06	4.23%

Max Active Ratios			
28.7 :1 CBD to THC			
0.0 :1 THC to CBD			



Sample Image	
	
Micro Visual:	NT
Percent Moisture	NT

RS (GCMS-MS)	PPM	RL
Compound		
Propane	NT	5.0
Isobutane	NT	5.0
n-Butane	NT	5.0
Ethanol	NT	5.0
Isopentane	NT	5.0
Acetonitrile	NT	5.0
Acetone	NT	50.0
2-Propanol	NT	5.0
n-Pentane	NT	5.0
n-Hexane	NT	5.0
Chloroform	NT	5.0
Tetrahydrofuran	NT	5.0
Benzene	NT	5.0
Carbon Tetrachloride	NT	5.0
n-Heptane	NT	5.0
Toluene	NT	5.0
Xylenes	NT	10.0



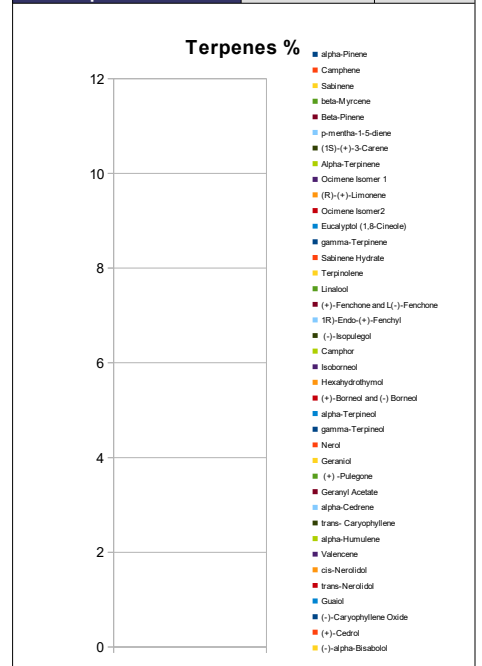
mL/Bottle	30
mg THC/Bottle	36.91
mg CBD/Bottle	822.56
(mg) total cannabinoids/bottle	1211.06

Metals	PPM	RL
Compound		
Lead	NT	0.018
Arsenic	NT	0.007
Cadmium	NT	0.004
Mercury	NT	0.020

Microbial	CFU/g
Compound	
Enterobacteriaceae	NT
Coliform	NT
Ecoli	NT
Aerobic	NT
Yeast	NT
Mold	NT



Terpene (GC-MS)	mg/mL	mg/Bottle
Compound		
alpha-Pinene	NT	NT
Camphene	NT	NT
Sabinene	NT	NT
beta-Myrcene	NT	NT
Beta-Pinene	NT	NT
p-mentha-1-5-diene	NT	NT
(1S)-(+)-3-Carene	NT	NT
Alpha-Terpinene	NT	NT
Ocimene Isomer 1	NT	NT
(R)-(+)-Limonene	NT	NT
Ocimene Isomer2	NT	NT
Eucalyptol (1,8-Cineole)	NT	NT
gamma-Terpinene	NT	NT
Sabinene Hydrate	NT	NT
Terpinolene	NT	NT
Linalool	NT	NT
(+)-Fenchone and L(-)-Fenchone	NT	NT
1R)-Endo-(+)-Fenchyl	NT	NT
(-)-Isopulegol	NT	NT
Camphor	NT	NT
Isoborneol	NT	NT
Hexahydrothymol	NT	NT
(+)-Borneol and (-) Borneol	NT	NT
alpha-Terpineol	NT	NT
gamma-Terpineol	NT	NT
Nerol	NT	NT
Geraniol	NT	NT
(+)-Pulegone	NT	NT
Geranyl Acetate	NT	NT
alpha-Cedrene	NT	NT
trans- Caryophyllene	NT	NT
alpha-Humulene	NT	NT
Valencene	NT	NT
cis-Nerolidol	NT	NT
trans-Nerolidol	NT	NT
Guaiol	NT	NT
(-)-Caryophyllene Oxide	NT	NT
(+)-Cedrol	NT	NT
(-)-alpha-Bisabolol	NT	NT
Total Terpenes	NT	NT



Chemist: JR
Report Expires: 09/19/19

RL=Reporting Limit
 NA=Not Applicable
 NT=Not Tested
 ND=Non Detected
 TNTC=Too Numerous to Count